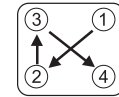
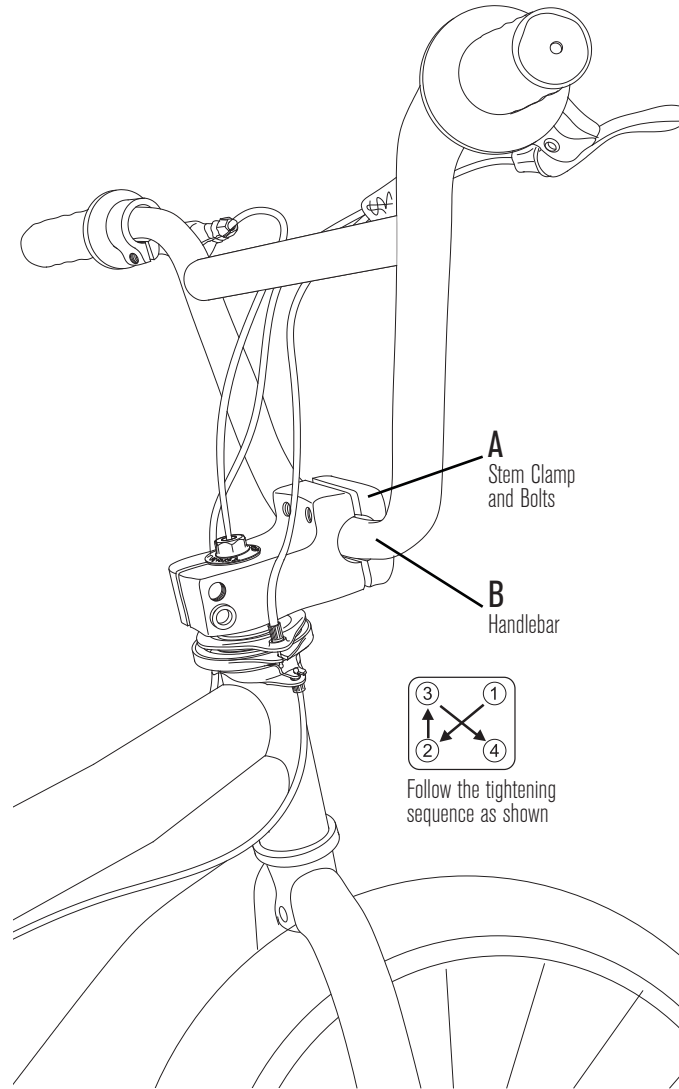
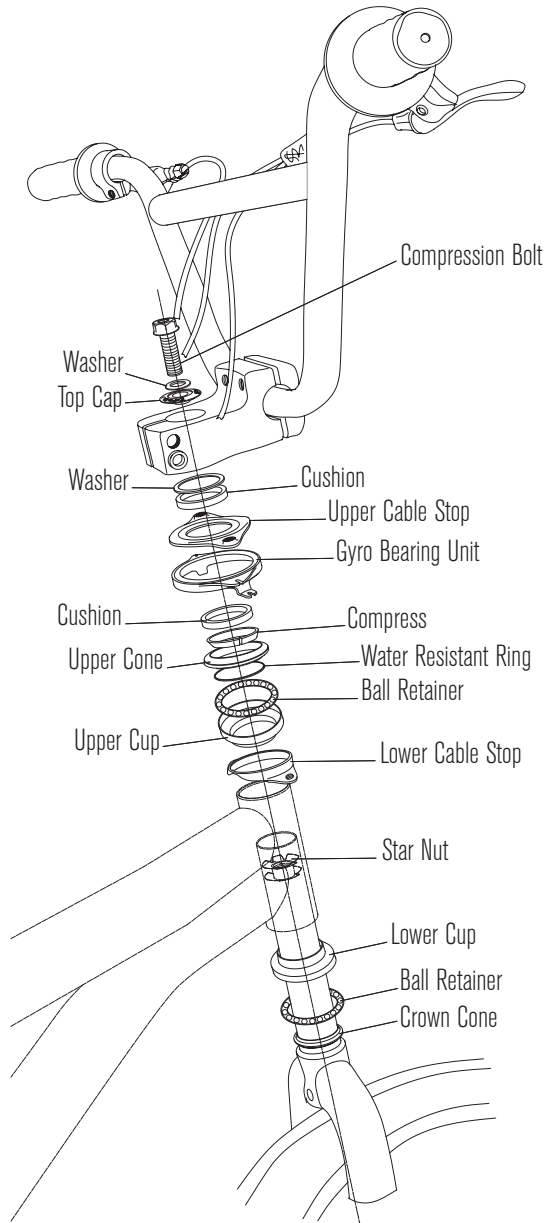


Assembly Diagram for Threadless Freestyle Bike Stem

Your bike has been assembled at the factory with a threadless freestyle bike stem. The diagrams below are provided for your reference.

1. Please follow sequence shown here for assembly.

2. Ready finished bike.



Follow the tightening sequence as shown



WARNING/IMPORTANT

NOTE: The stem on your bike has been properly assembled at the factory. This information is provided for your reference.



89 SOUTH KELLY ROAD
 AMERICAN CANYON, CA 94503
 1.800.288.1560

www.dynacraftbike.com